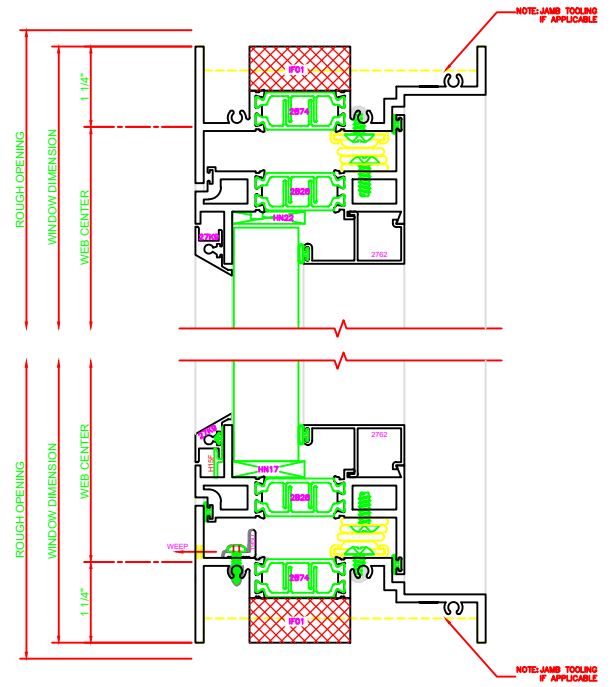


130	HEAD
	SERIES: 450G
	CASEMENT IN
	4-BAR ARMS

230	SILL
	SERIES: 450G
	CASEMENT IN
	4-BAR ARMS

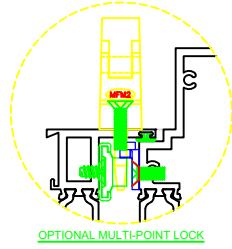
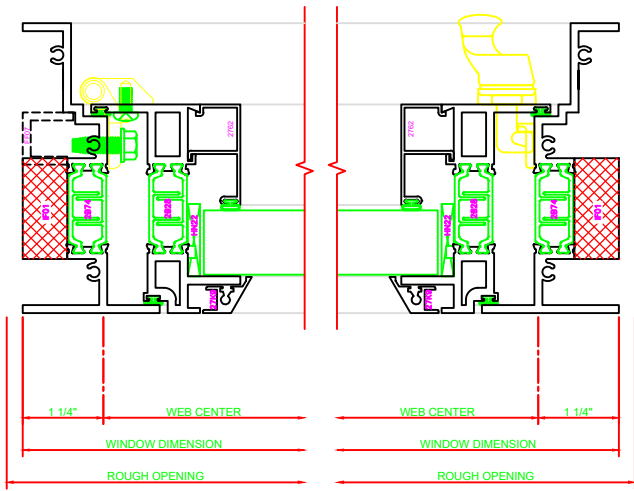
430	JAMB
	SERIES: 450G
	CASEMENT IN
	4-BAR ARMS

431	JAMB
	SERIES: 450G
	CASEMENT IN



4-BAR ARMS BUTT HINGE

ERECTOR NOTE:
 15 THE HINGED JAMB FRAME SHALL BE INSTALLED PLUMB. ALL HINGES SHALL BE SECURELY BLOCKED AND ANCHORED TO THE CONDITION THROUGH THE HINGES OR AS CLOSE AS POSSIBLE TO THE HINGES.



131	HEAD
	SERIES: 450G
	CASEMENT IN
	BUTT HINGE

231	SILL
	SERIES: 450G
	CASEMENT IN
	BUTT HINGE

432	JAMB
	SERIES: 450G
	CASEMENT IN
	BUTT HINGE

431	JAMB
	SERIES: 450G
	CASEMENT IN

